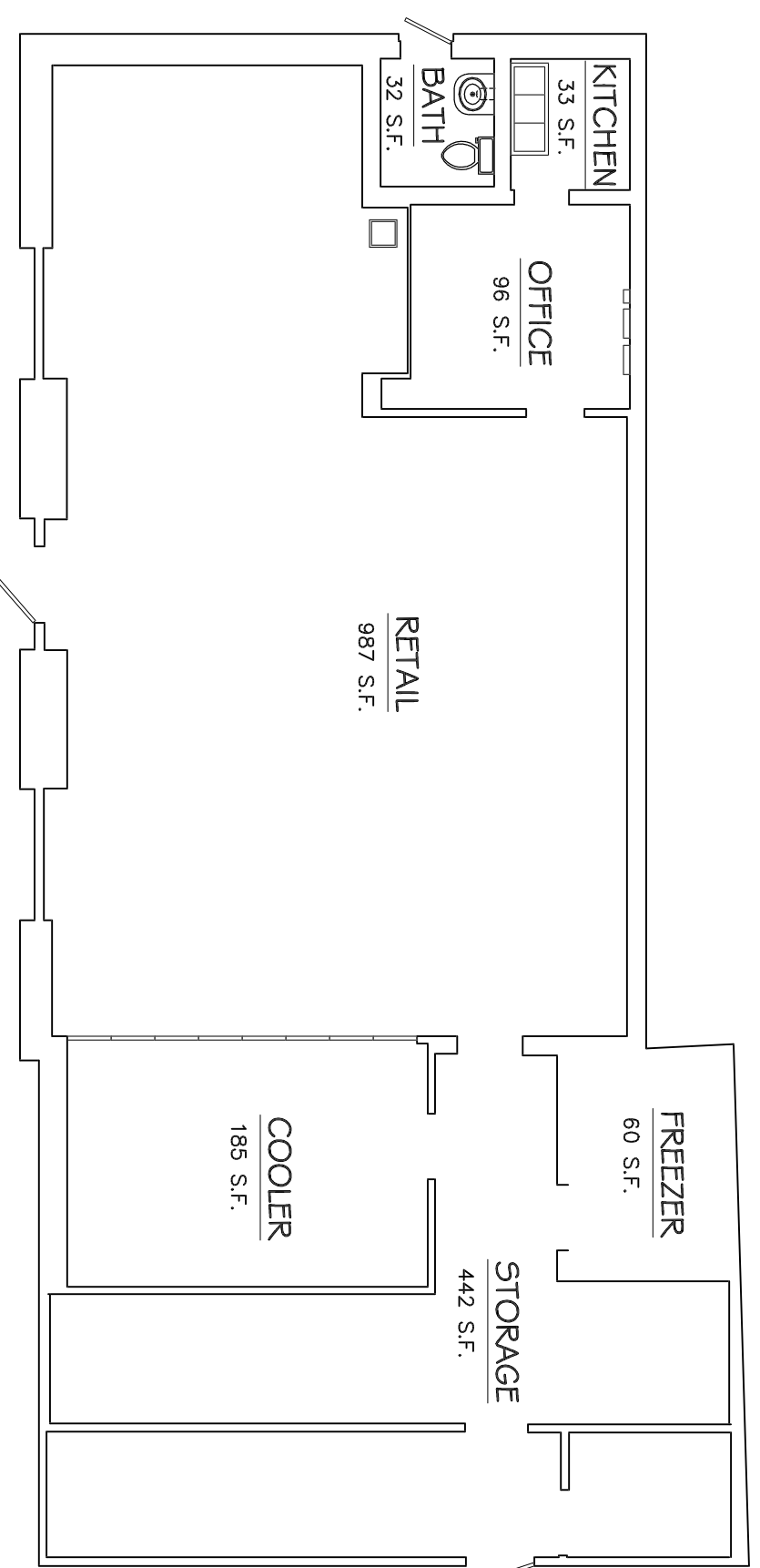


# ZONING DATA

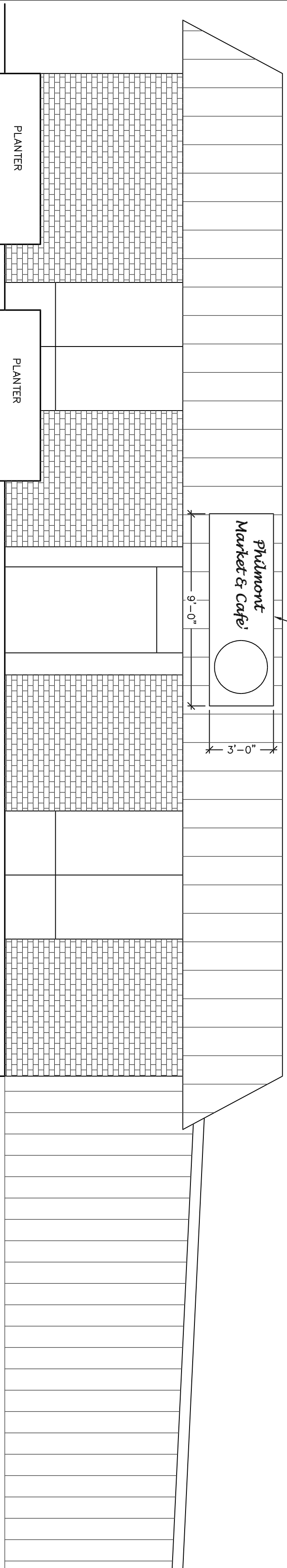
## District: General Business.

### Minimum Side Yard Dimension: None.

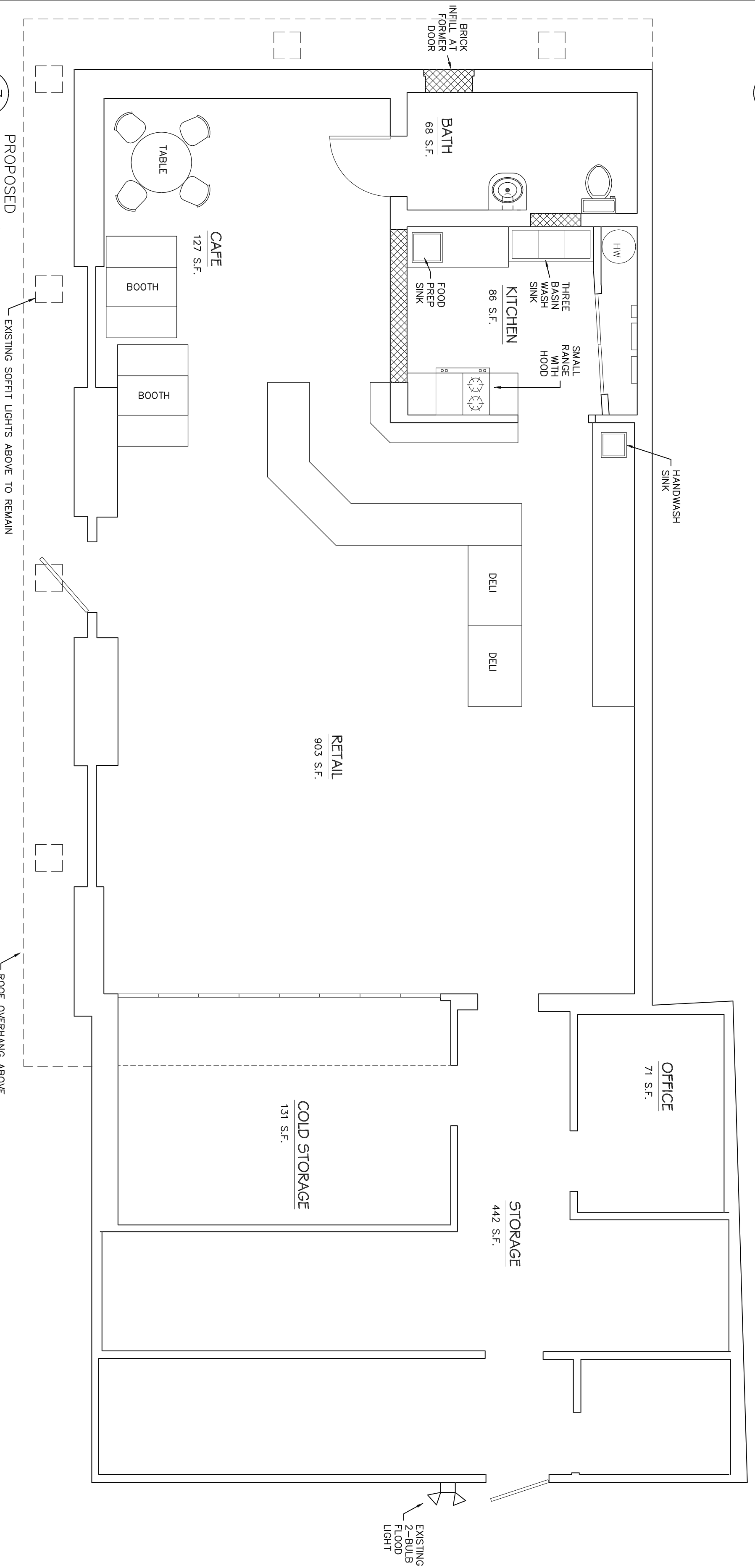
PARKING CALCULATION						
USE	MIN NUMBER OF SPACES	AREA SQUARE FEET	NUMBER OF EMPLOYEES	NUMBER OF SEATS	REQUIRED NUMBER OF PARKING SPACES	
RETAIL	1 FOR EACH 200 S.F. OF GROSS FLOOR AREA PLUS ONE FOR EACH EMPLOYEE	903	3	4.5	3	
CAFE	1 FOR EACH 3 SEATS OR 1 FOR EACH 100 S.F. OF GROSS FLOOR AREA, WHICHEVER IS GREATER	127		12	4	
					12 TOTAL	



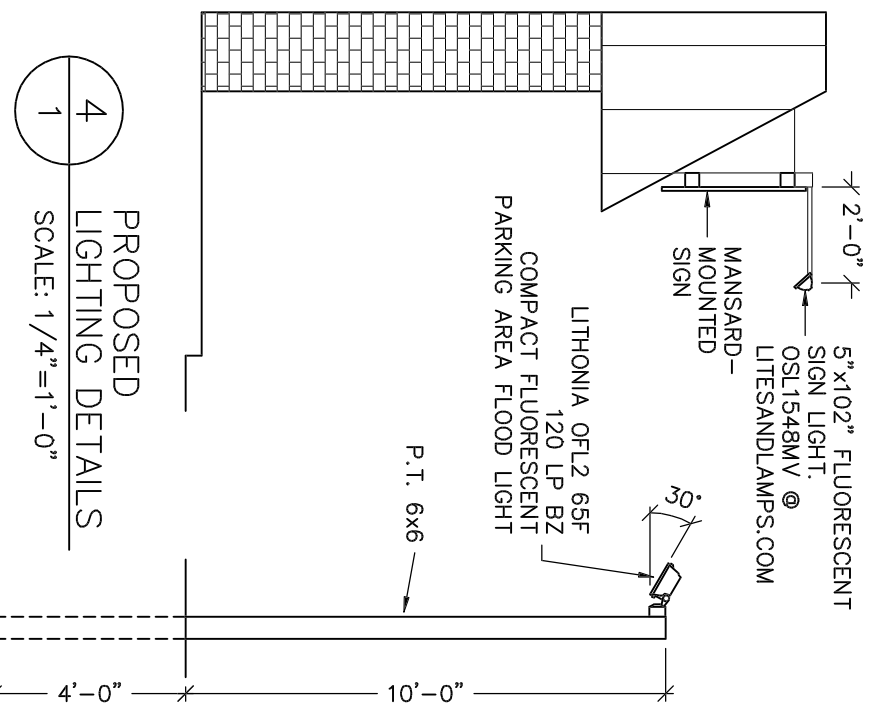
1 EXISTING FLOOR PLAN  
SCALE: 1/8"=1'-0"



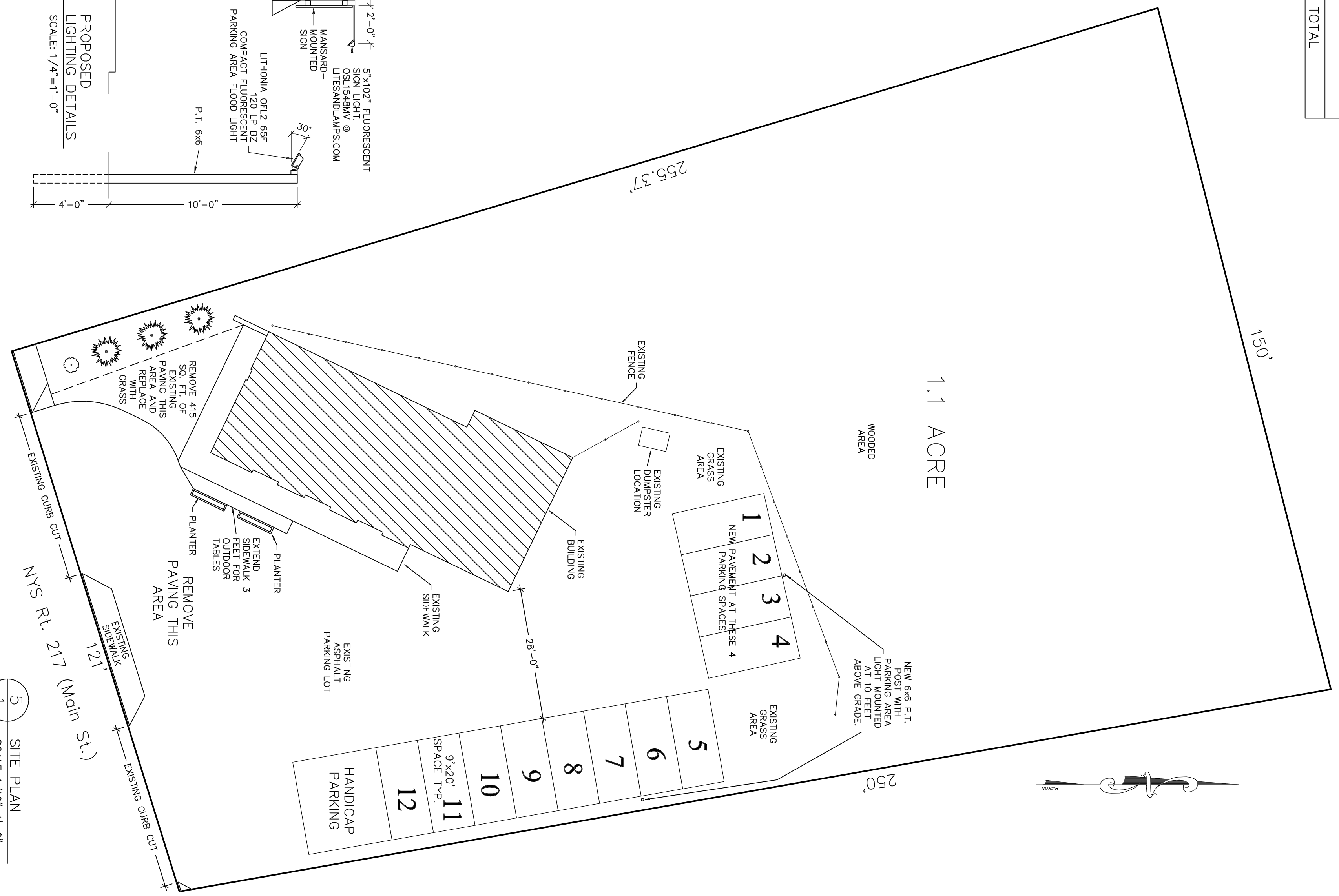
2 PROPOSED EAST ELEVATION  
SCALE: 1/4"=1'-0"



3 PROPOSED FLOOR PLAN  
SCALE: 1/4"=1'-0"



4 PROPOSED LIGHTING DETAILS  
SCALE: 1/4"=1'-0"



5 SITE PLAN  
SCALE: 1/16"=1'-0"

**PLANNING BOARD ENDORSEMENT**  
 Approved by resolution of the Planning Board of the Village of Philmont dated \_\_\_\_\_ subject to the conditions and the requirements of said resolution. Any changes, variance, modification or revision of this plan as so approved shall void this approval.  
 Chairperson, Village of Philmont Planning Board \_\_\_\_\_ Date \_\_\_\_\_

Chris Hoppe, P.E.  
 61 Summit St.  
 P.O. Box 759  
 Philmont,  
 NY 12565  
 (518) 755-5155

**Philmont Market and Cafe**  
 (Former Stewarts Shop)  
 116 Main St., Philmont, New York 12565

## PROPOSED CHANGES

TITLE  
 DATE: 2/7/2011  
 3/8/2011  
 ISSUE: PRELIMINARY  
 PUBLIC HEARING

SHEET  
 1