



Main Street

Elm Street

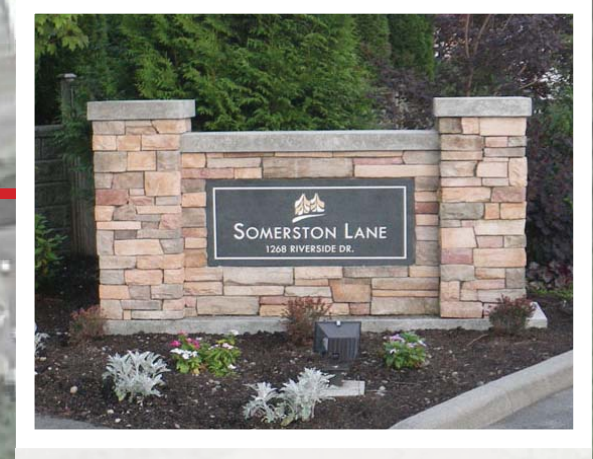
Main Street

Elm Street

Canal Street



PROPOSED BUILDING FOR FUTURE DEVELOPMENT
POTENTIAL BUILDING USES:
• FINE CRAFTSMAN
• LIGHT INDUSTRIAL
• ALTERNATIVE HEALTH CARE
• CLASS A OFFICE SPACE



INTERPRETIVE MONUMENT SIGNAGE



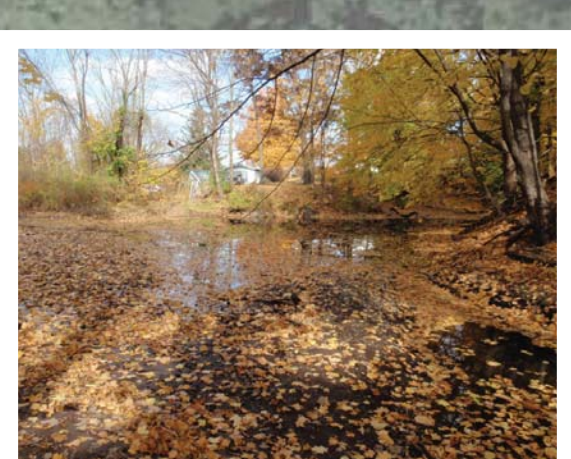
MILL REMAINS TO BE UNCOVERED



INTERPRETIVE SIGNAGE



MILL POND PERIMETER BOARDWALK OVERLOOK



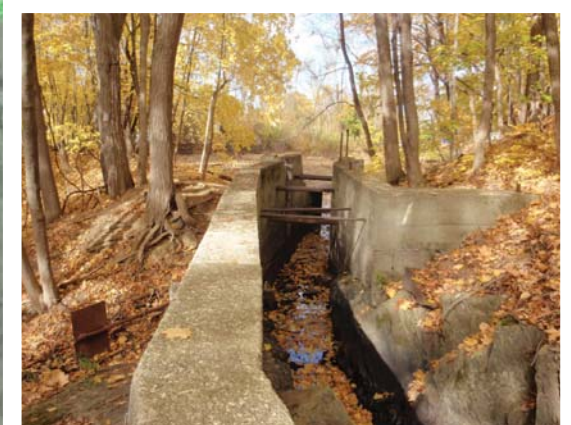
EXISTING MILL POND

EXISTING BUILDINGS

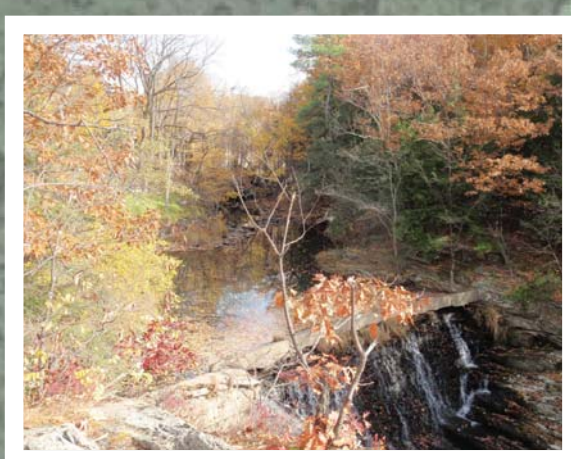
ENTRY PLAZA WITH WATER FEATURE

EXISTING BUILDING WITH PROPOSED EXPANSION FOR 2,000 SF

WALKING TRAIL THROUGH WOODED AREA



WALKING TRAIL ALONG REMAINING MILL SLUICE



OVERLOOK TO DAM AND SUMMIT MILL WITH INTERPRETIVE SIGNAGE

HIGH FALLS

VILLAGE OF PHILMONT WATERFRONT DISTRICT

CANAL STREET MILL SITE ENHANCEMENT CONCEPT PLAN

DATE: NOVEMBER 18, 2015

