

Philmont BOA Step 3 Working Groups: Community contribution & neighborhood catalyst



Philmont BOA Step 3 Working Groups

WHO can be in a Working Group?

WHAT work will Working Groups do?

WHERE will we be doing this work?

HOW will Working Groups advance the Plan?

WHY join a Working Group?

WHEN will work start?

Philmont BOA Step 3 Working Groups

WHO can be in a Working Group?

YOU!!

WHAT work will Working Groups do?

WHERE will we be doing this work?

HOW will Working Groups advance the Plan?

WHY join a Working Group?

WHEN will work start?

Philmont BOA Step 3 Working Groups

WHO can be in a Working Group?

YOU!!

WHAT work will Working Groups do?

Translate BOA Step 2 Goals into Step 3 Pre-development activities

WHERE will we be doing this work?

HOW will Working Groups advance the Plan?

WHY join a Working Group?

WHEN will work start?

Philmont BOA Step 3 Working Groups

WHO can be in a Working Group?

YOU!!

WHAT work will Working Groups do?

Translate BOA Step 2 Goals into Step 3 Pre-development activities

WHERE will we be doing this work?

BOA Sub-areas and Strategic Sites

HOW will Working Groups advance the Plan?

WHY join a Working Group?

WHEN will work start?

Philmont BOA Step 3 Working Groups

WHO can be in a Working Group?

YOU!!

WHAT work will Working Groups do?

Translate BOA Step 2 Goals into Step 3 Pre-development activities

WHERE will we be doing this work?

BOA Step 2 Sub-areas and Strategic Sites

HOW will Working Groups advance the Plan?

By being a part of the decision making and action plan

WHY join a Working Group?

WHEN will work start?

Philmont BOA Step 3 Working Groups

WHO can be in a Working Group?

YOU!!

WHAT work will Working Groups do?

Translate BOA Step 2 Goals into Step 3 Pre-development activities

WHERE will we be doing this work?

BOA Step 2 Sub-areas and Strategic Sites

HOW will Working Groups advance the Plan?

By being a part of the decision making and action plan

WHY join a Working Group?

To be part of revitalization in your neighborhood

WHEN will work start?

Philmont BOA Step 3 Working Groups

WHO can be in a Working Group?

YOU!!

WHAT work will Working Groups do?

Translating BOA Step 2 Goals into Step 3 Pre-development activities

WHERE will we be doing this work?

BOA Step 2 Sub-areas and Strategic Sites

WHY join a Working Group?

To be part of revitalization in your neighborhood

HOW will Working Groups advance the Plan?

By being a part of the decision making and action plan

WHEN will work start?

IMMEDIATELY, and continuing into the future for several months

WHEN will work start?
Working Groups timeline

**First meeting:
Saturday, February 16th
2pm @ Village Hall**

**PLEASE COME TO THIS MEETING IF
YOU WOULD LIKE TO JOIN A
WORKING GROUP**

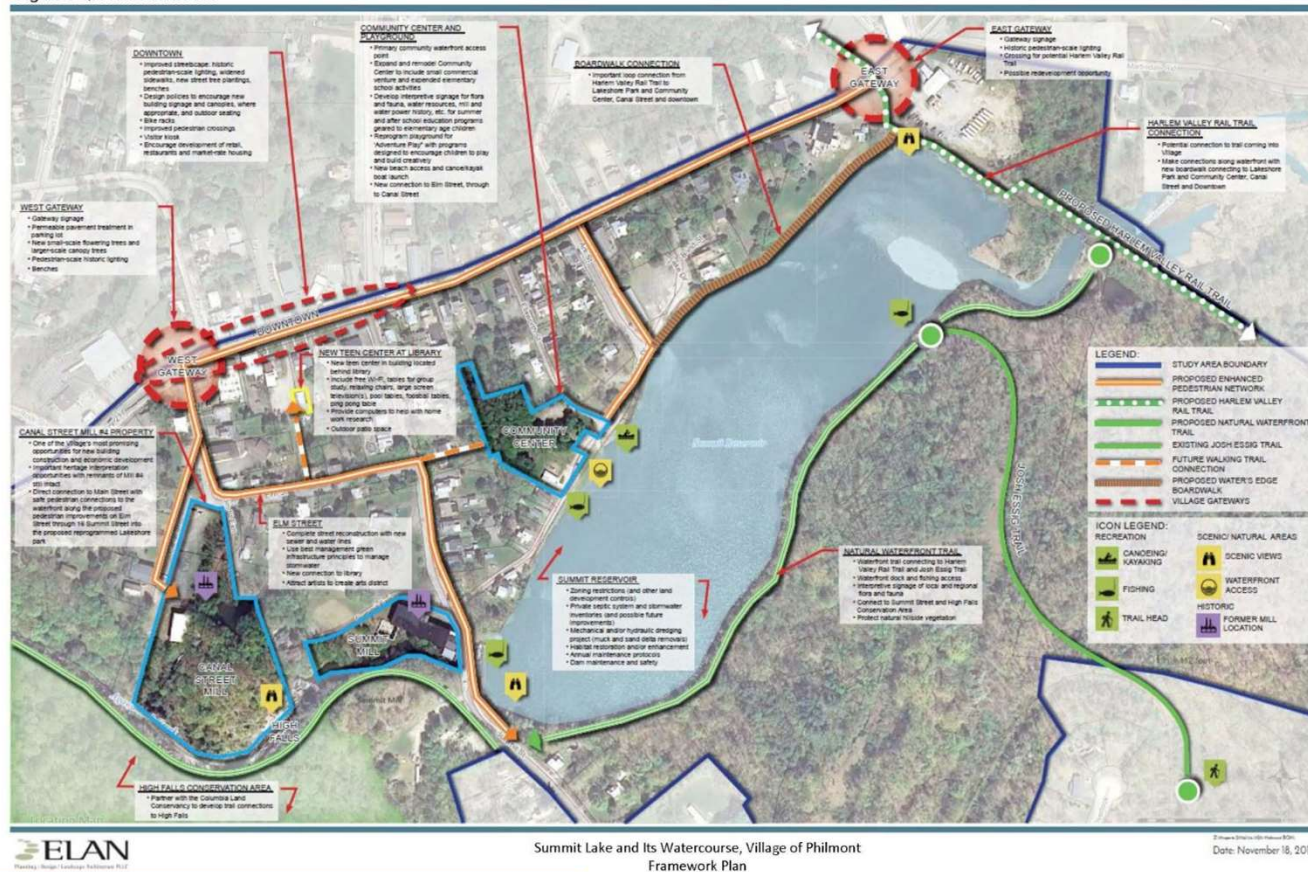
WHAT work will Working Groups be doing?

Translate BOA Step 2 Goals into Step 3 Pre-development activities

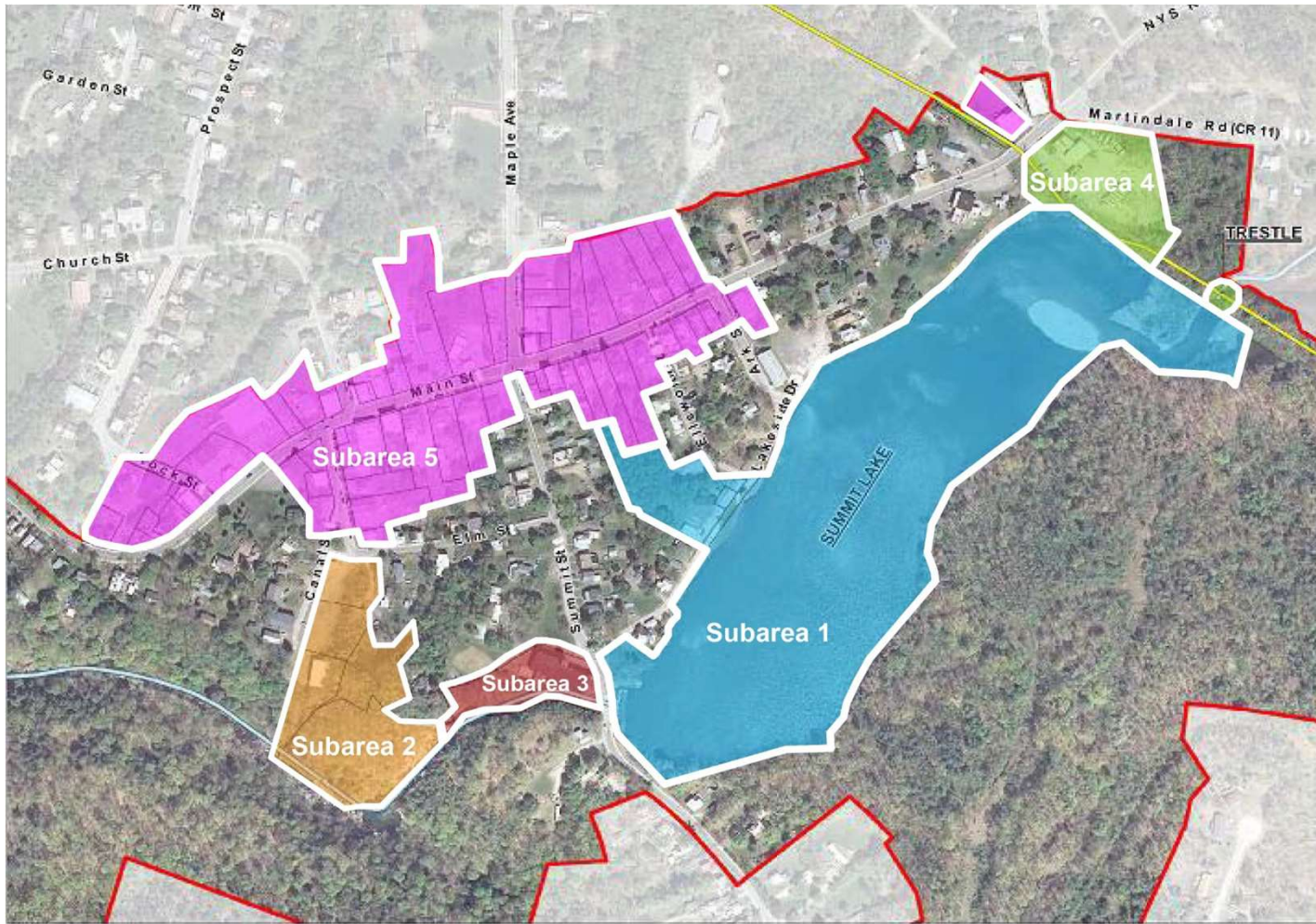
Framework Plan

Analysis of the Proposed Brownfield Opportunity Area

Figure 3-Q: Framework Plan



WHERE will we be doing this work? Philmont BOA Sub-areas



WHERE will we be doing this work? Philmont BOA Sub-areas & Strategic Sites

Analysis of the Proposed Brownfield Opportunity Area

Figure 3-Jb: BOA Strategic Sites Map

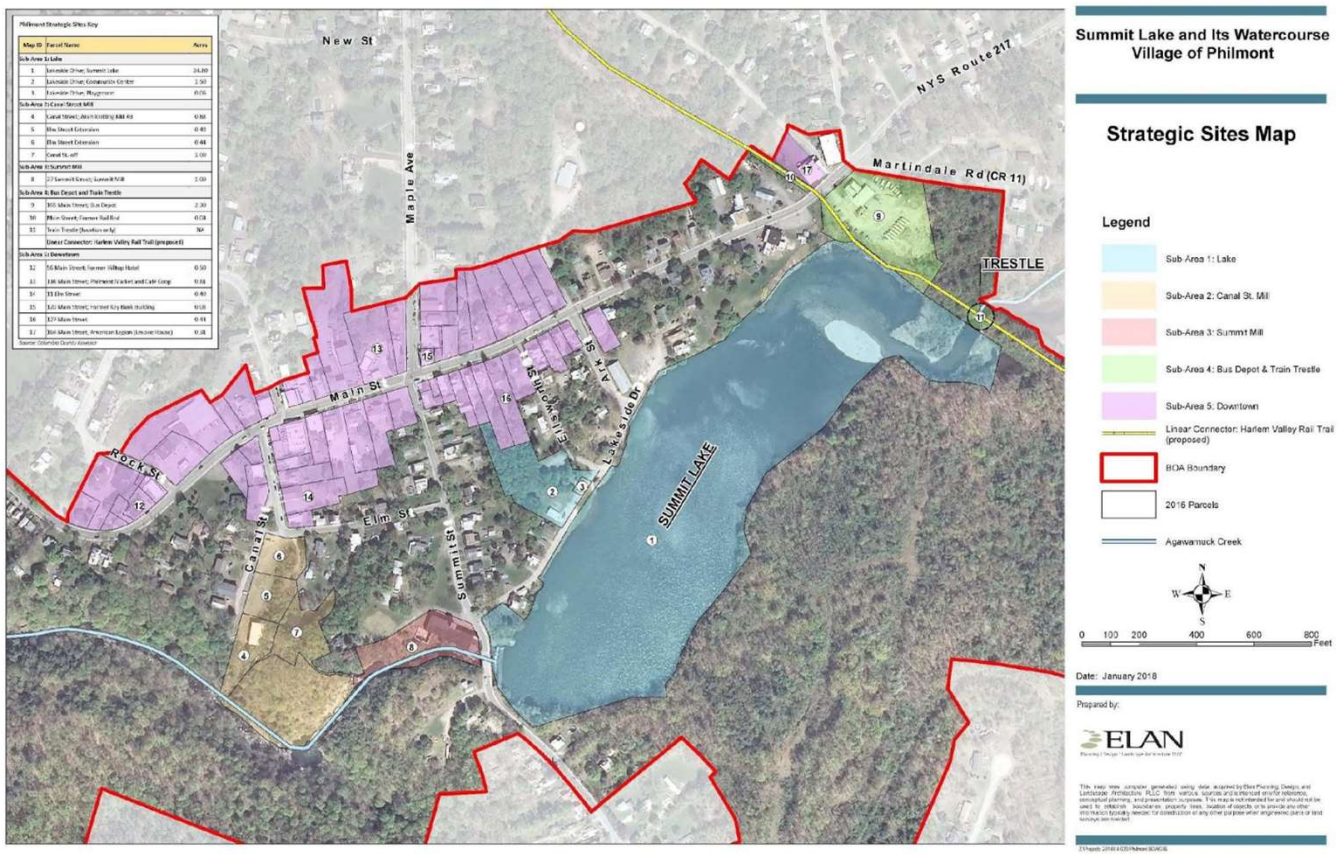
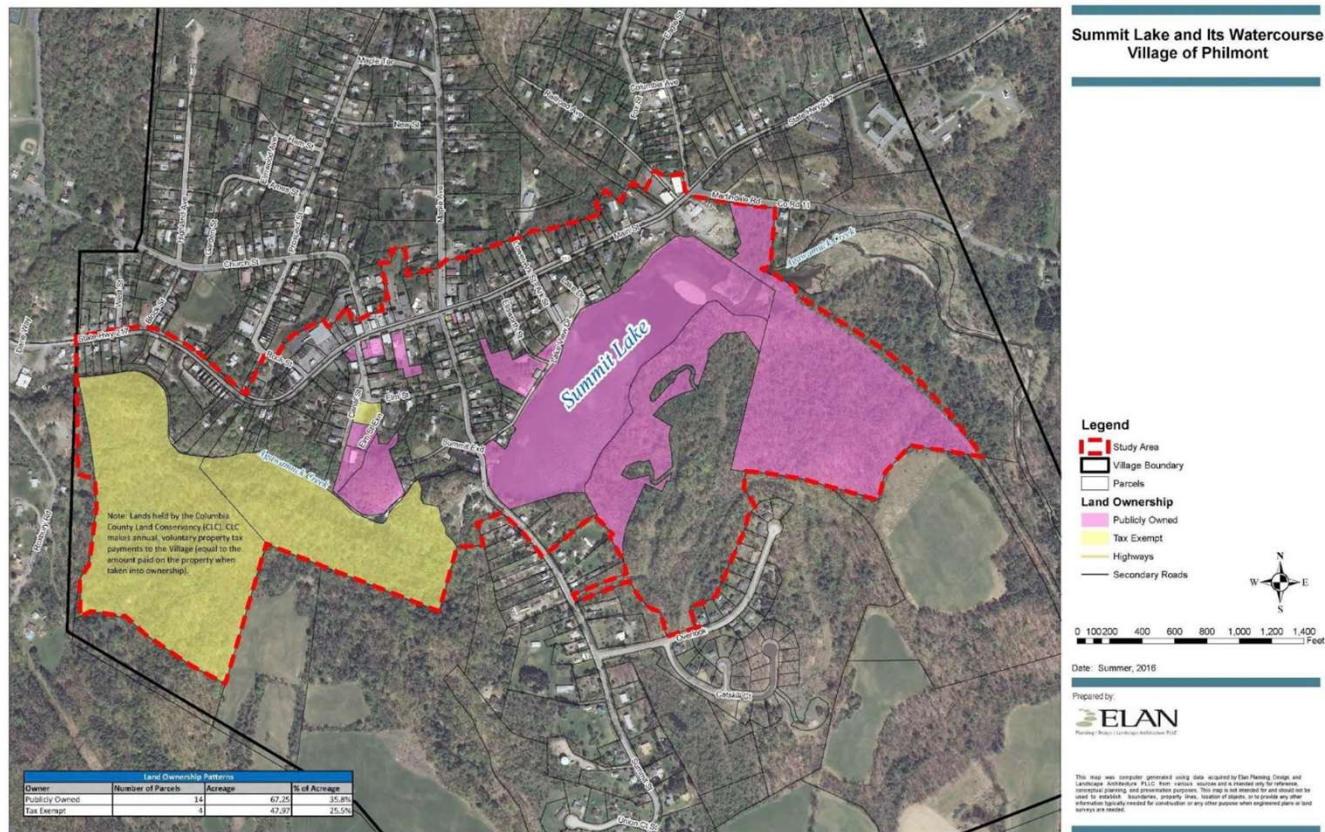


Figure 3-Jb: BOA Stra

WHERE will we be doing this work? Site control / Publicly owned land

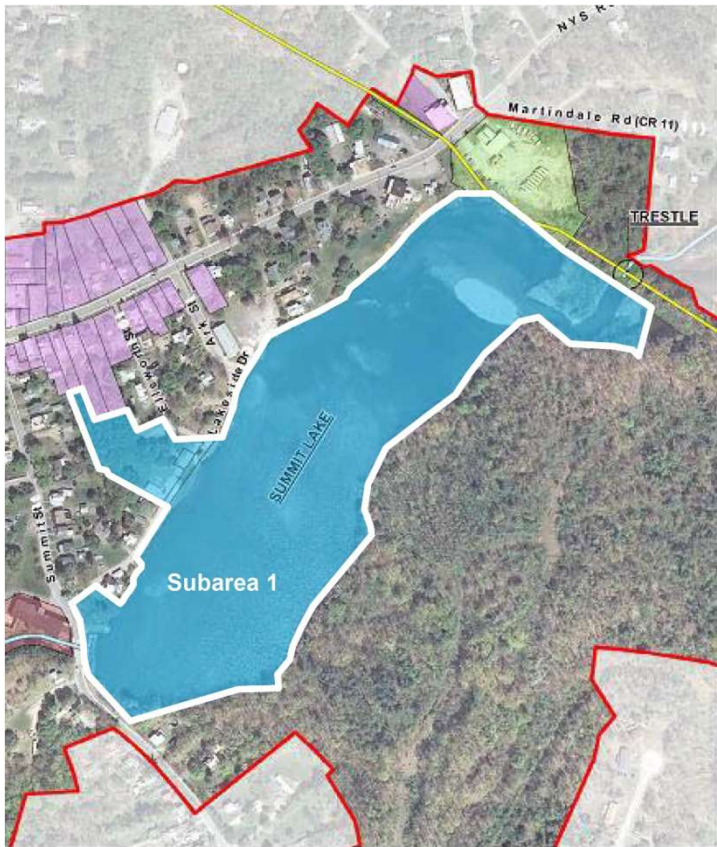
Analysis of the Proposed Brownfield Opportunity Area

Figure 3-K: BOA Land Ownership Map

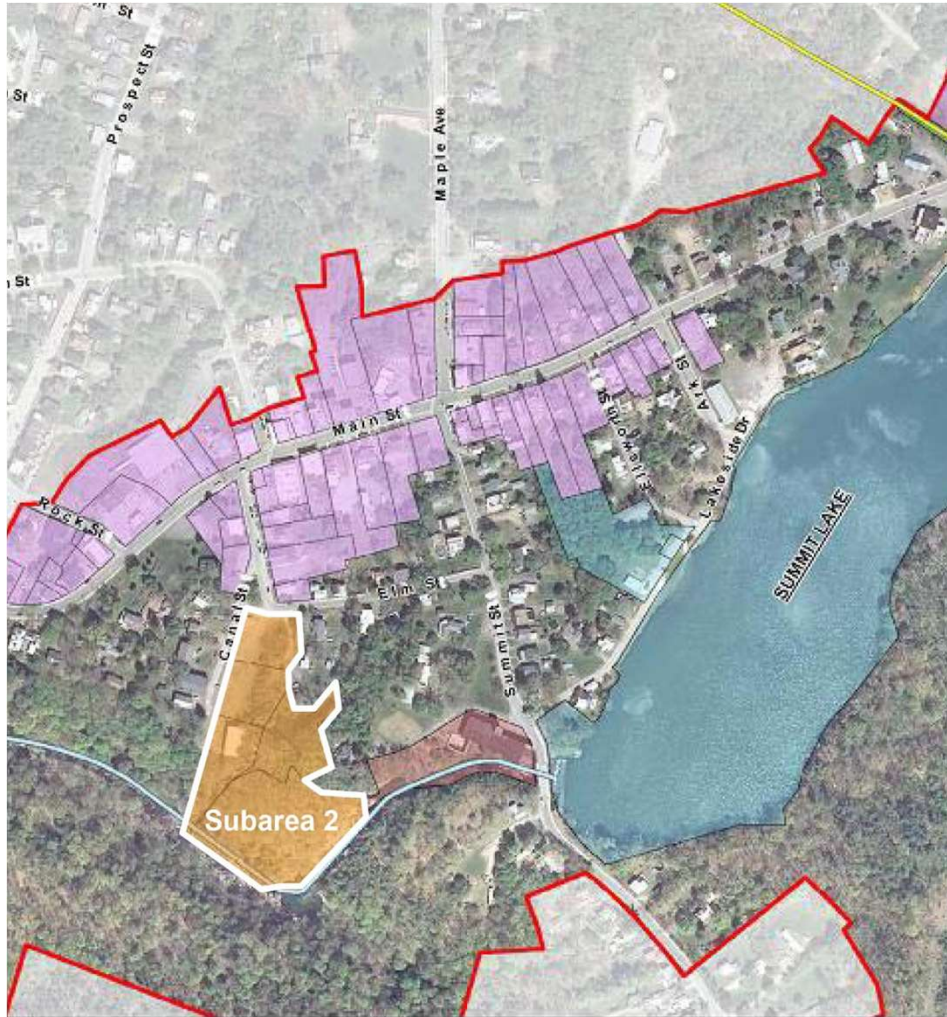


WHERE will we be doing this work?

Sub-area 1: Summit Lake & Community Center

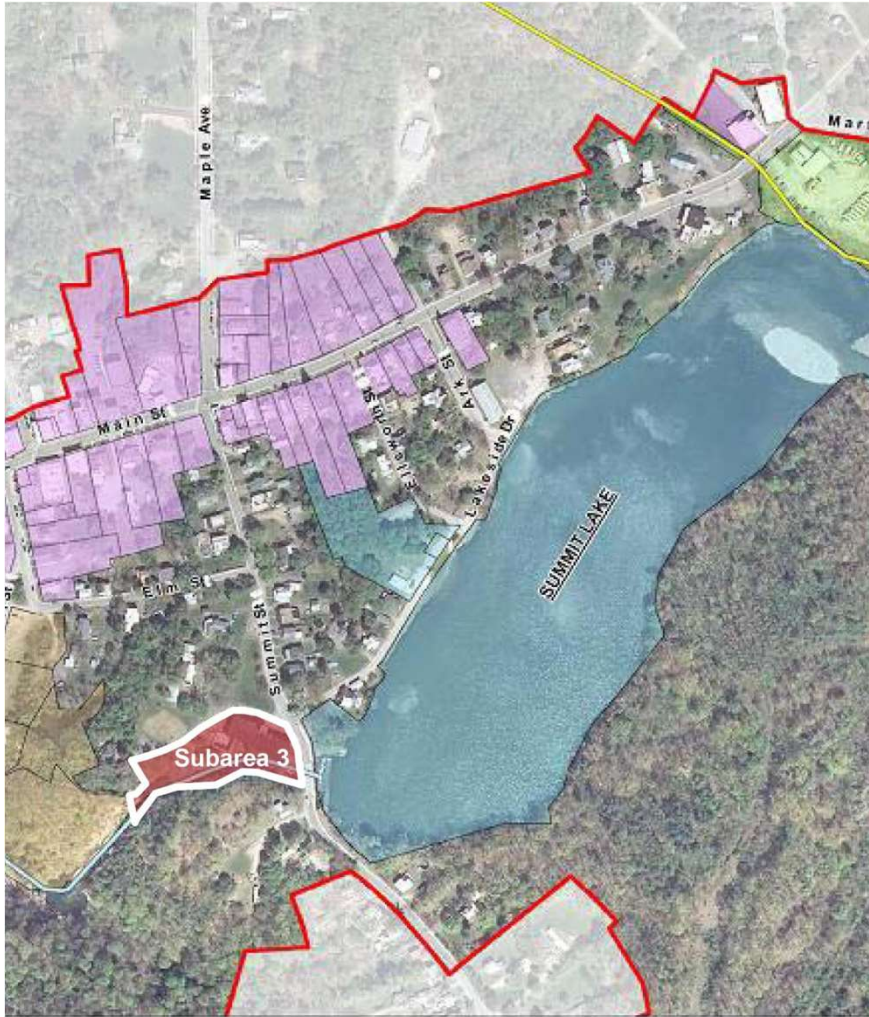


WHERE will we be doing this work? Sub-area 2: Canal Street Mills

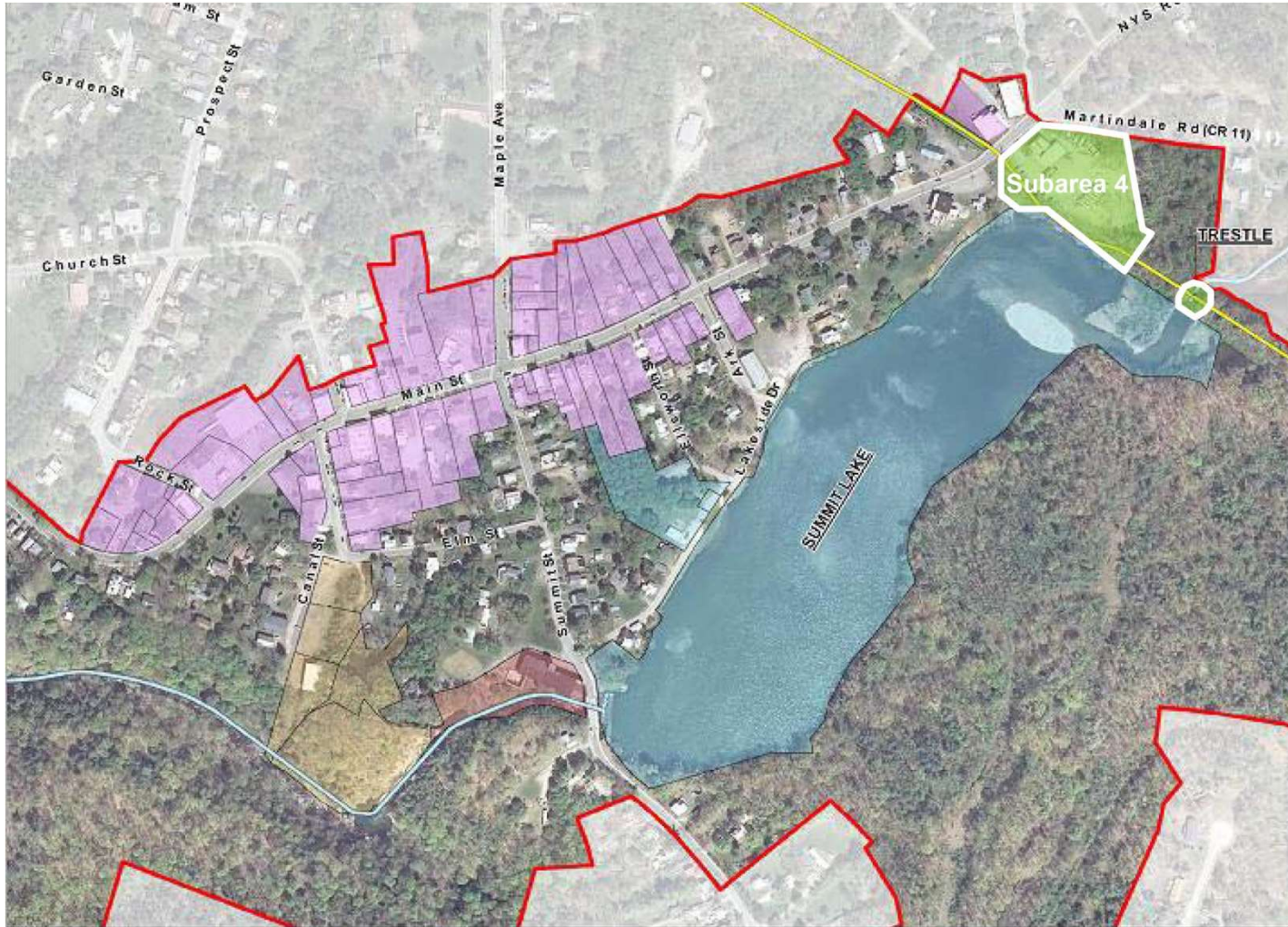


WHERE will we be doing this work?

Sub-area 3: Summit Mill



WHERE will we be doing this work? Sub-area 4: Train Trestle & HVRT



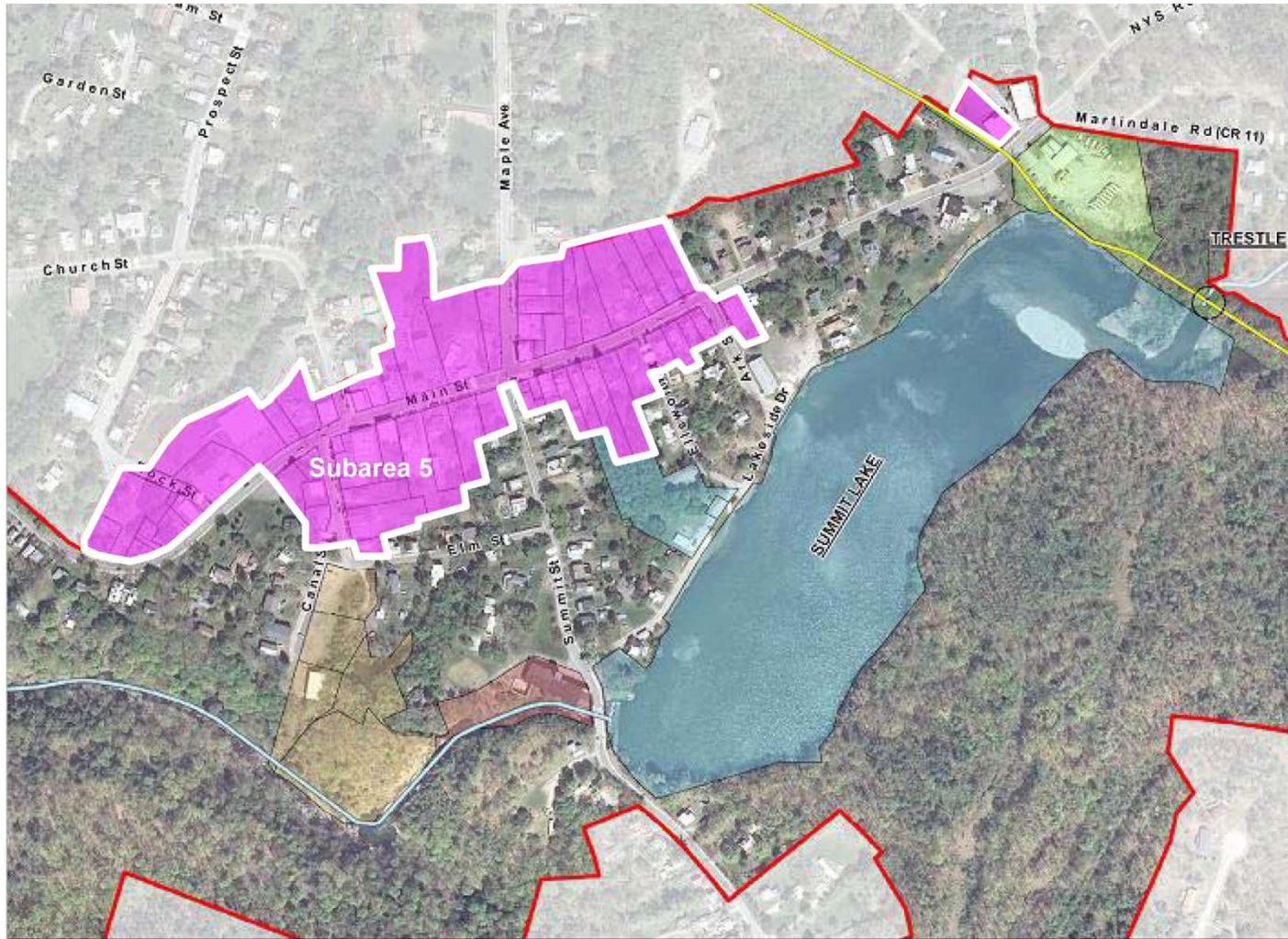
WHERE will we be doing this work?

Sub-area 4: Train Trestle & HVRT



WHERE will we be doing this work?

Sub-area 5: Main Street



WHERE will we be doing this work?

Sub-area 5: Main Street



WHERE will we be doing this work? Sub-area 5: Main Street

Figure 1-A: Main Street Program Map

The Main Street Program

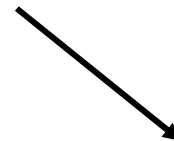
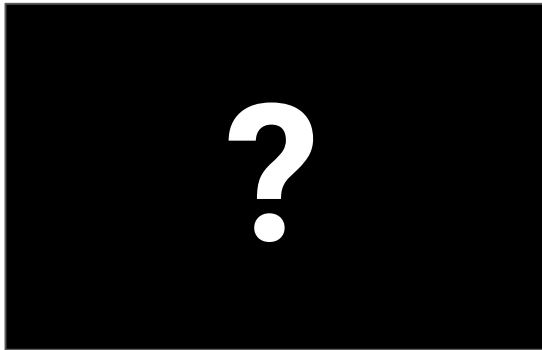
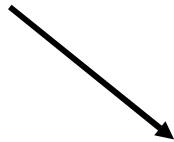
The Philmont Beautification, Inc. Main Street Program has assisted more than 41 public/private investment revitalization projects in the Village of Philmont to date, including 22 building restorations consisting of 2 farm-to-table commercial re-adapts, 10 affordable housing renovations, the opening of 4 restaurants, an 8-room historic hotel, a small community resource center, a seasonal Main St. farmers market, a local brew public house, a direct-market & commercial kitchen, a public park restoration, and streetscape improvement projects. FBI received a "model program" citation from NYS Homes and Community Renewal in 2010.

The program increased small business employment opportunities, local contractor involvement, economic development, and a reinvestment of pride in the community. Priority was given to buildings that had experienced sustained physical deterioration, decay, neglect, and were located in a concentrated area that had a significant number of substandard buildings and storefronts.



HOW will Working Groups advance the plan? Decision making and action plans

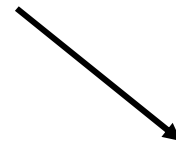
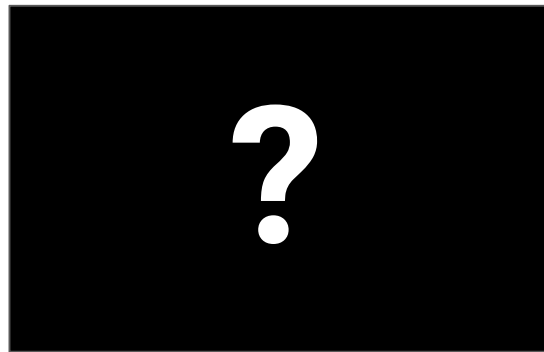
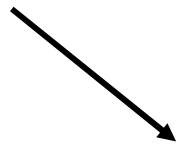
MAKE PLAN



TAKE ACTION

HOW will Working Groups advance the plan? Decision making and action plans

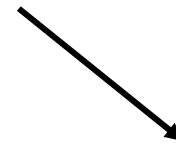
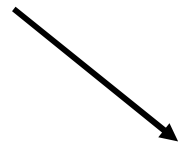
STEP 2 GOALS



CONSTRUCTION

HOW will Working Groups advance the plan?
Decision making and action plans

STEP 2 GOALS



CONSTRUCTION

HOW will Working Groups advance the plan? Decision making and action plans

STEP 2 GOALS

WORKING GROUP PRE-DEVELOPMENT BUCKET

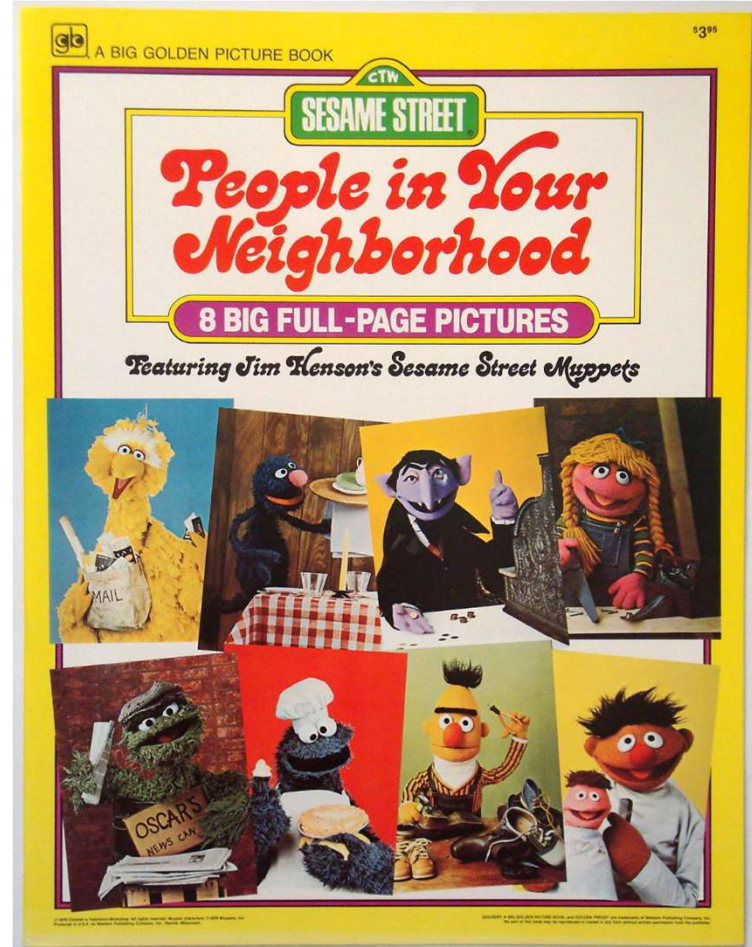
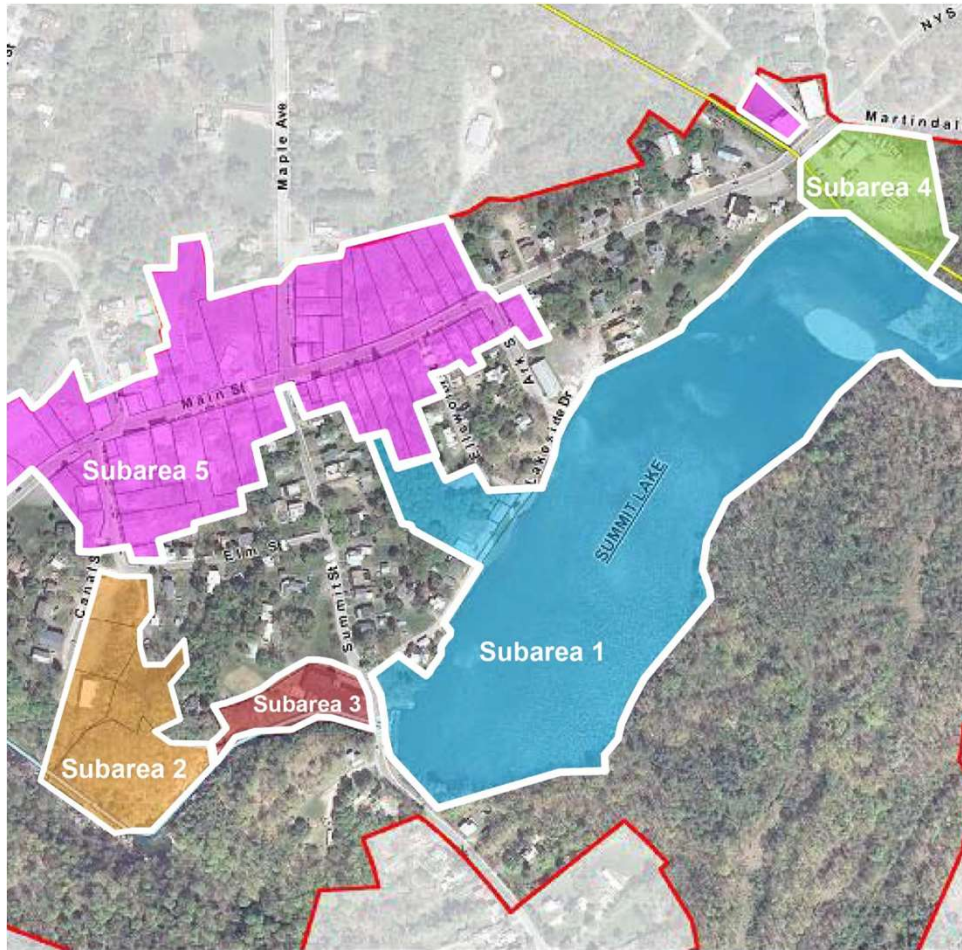
Get to know your sub-area:

- What are Step 2 goals for your sub-area?
- What questions do goals bring up?
- What can we do ourselves?
- What do we need professional help with?

And more...

CONSTRUCTION

WHY join a working group? Sub-areas are our neighborhoods



WHEN will work start?
Working Groups timeline

**MEET YOUR NEIGHBORS
at the first working group
meeting:**

**Saturday, February 16th
2pm @ Village Hall**

WHEN will work start?

Working Groups timeline



WE HOPE YOU WILL JOIN US!

BOA Subarea 1 Working Group Summit Lake & Community Center



BOA Subarea 1 Working Group

WHO can be in Working Group 1?

BOA Subarea 1 Working Group

WHO can be in Working Group 1?



BOA Subarea 1 Working Group

WHO can be in Working Group 1?

And boaters

And fishermen

And birdwatchers

And limnologists

And hikers

And arborists

And swimmers

And landscape Architects

And environmentalists

And hydrologists

And parents and children

BOA Subarea 1 Working Group

WHO can be in Working Group 1?

And boaters

And fishermen

And birdwatchers

And limnologists

And hikers

And arborists

And swimmers

And landscape Architects

And environmentalists

And hydrologists

And parents and children

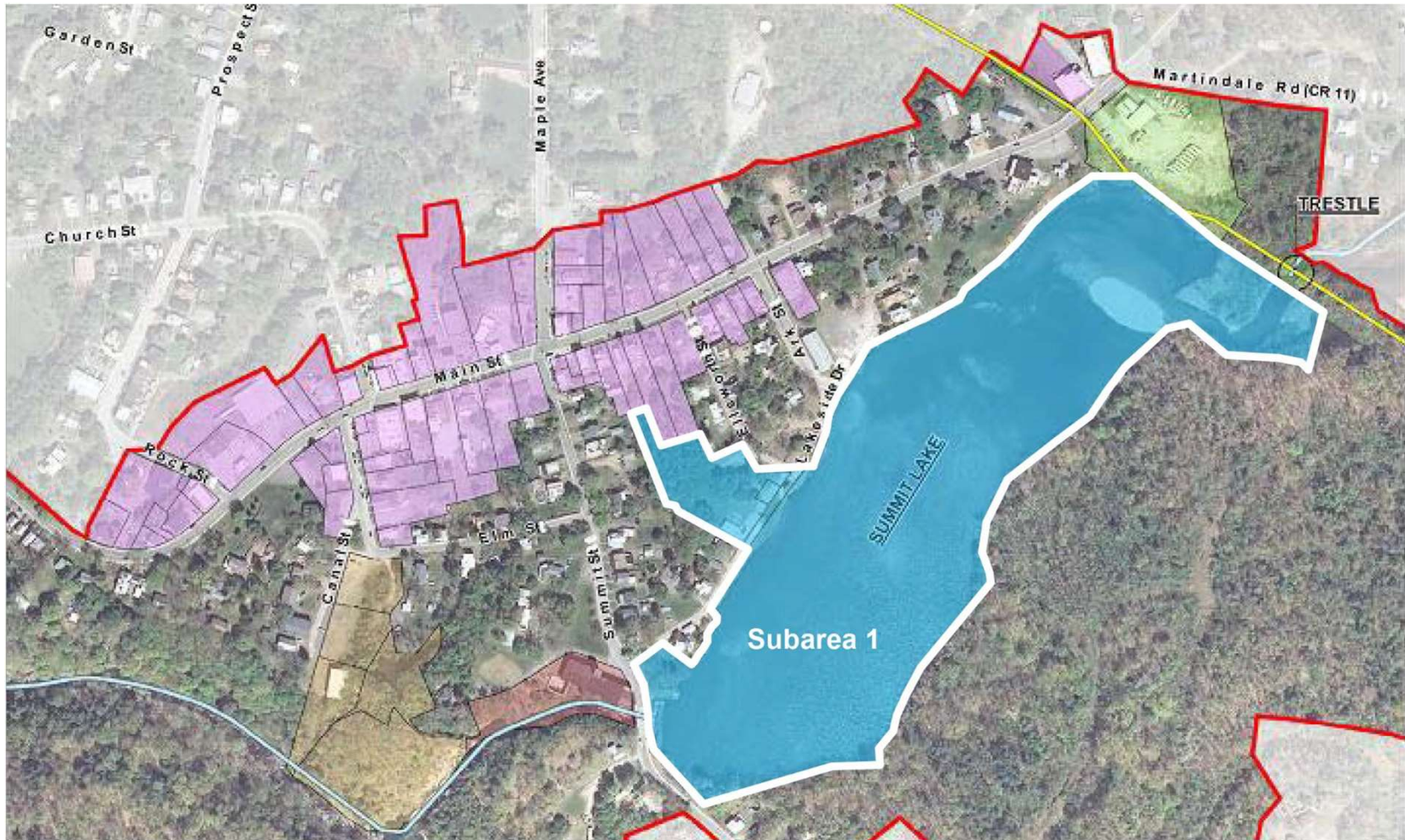
And anyone else that loves the lake

BOA Subarea 1 Working Group

WHERE will Working Group 1 do this work?

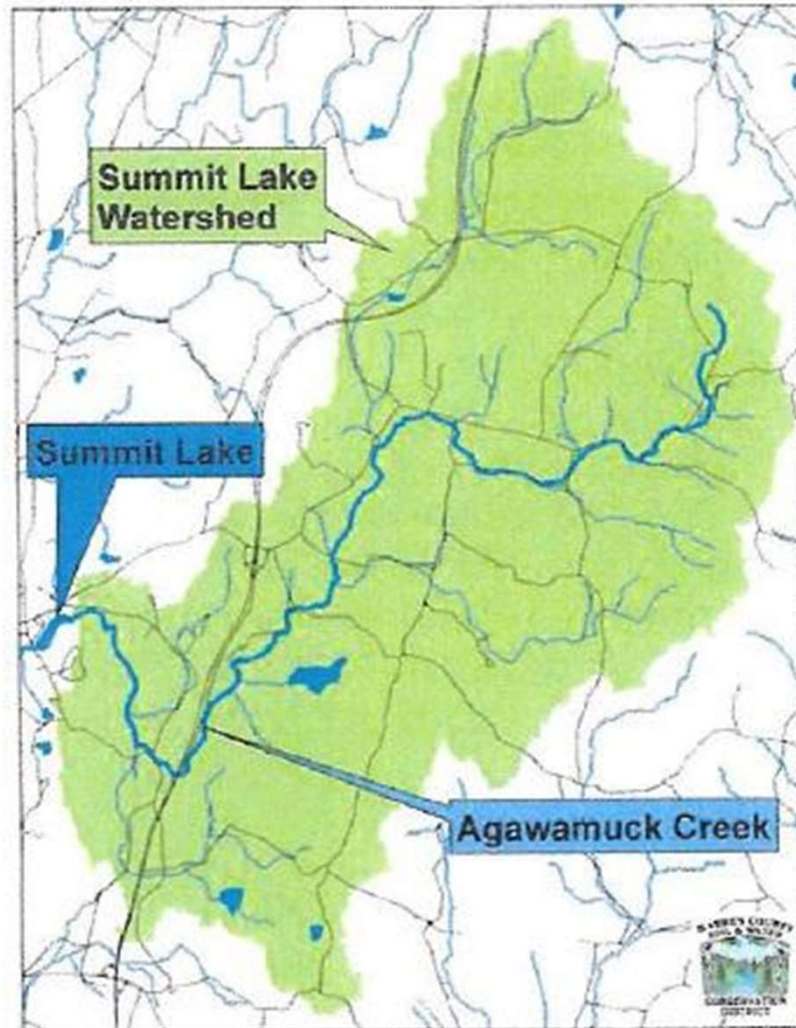
BOA Subarea 1 Working Group

WHERE will Working Group 1 do this work?



BOA Subarea 1 Working Group

WHERE will Working Group 1 do this work?



BOA Subarea 1 Working Group

WHERE will Working Group 1 do this work?



BOA Subarea 1 Working Group

HOW will Working Group 1 advance the Plan?

BOA STEP 2 RECOMMENDATIONS

Recommendations	Project Champion	Potential Partners	Imme	Short	Medi	Long	Ongo	Potential Funding Opportunities
Nature & Recreation								
N&R 8: Removal of trash and junk from the watercourse and its banks	Village of Philmont, Nature and Recreation Task Force	local landowners and businesses, the Columbia Land Conservancy, Local volunteer organizations such as scout and outdoor clubs					X	Local businesses and organizations



ACTIONABLE OBJECTIVES



BOA Subarea 1 Working Group

WHAT are the step 2 goals for Subarea 1?

Develop opportunities to connect the lake and its watercourse with surrounding natural resources and neighboring communities

Restore water quality throughout the watercourse to meet swimming and fishing standards in Summit Lake

Develop micro-hydropower at Summit Dam location and watercourse drops as a locally created, shared energy source

Increase ecological resilience of the lake, its watercourse, and surrounding landscapes

Restore Lakeshore Park, community center, and Summit Lake waterfront as a focal point for community gathering

BOA Subarea 1 Working Group

WHAT can we do ourselves?

Create a lake protection ordinance

Remove trash and junk from the watercourse and its banks

Create annual maintenance protocols for Summit Lake

Identify resource and wildlife habitat restoration priorities

Create partnerships with local communities within the Summit Lake watershed

Identify pollution sources within the watershed

Perform regular water quality testing of Summit Lake

BOA Subarea 1 Working Group

WHAT do we need professional help with?

Development of Lake Drive Community Center and waterfront plan

Design of a stormwater and sediment catchment system above the Lake

Removal of excess silt and sediment, and potential deepening of the Lake

Establish a sedimentation basin near the mouth of the creek

Eliminate identified pollution sources

Design of micro-hydropower generator system

BOA Subarea 1 Working Group

WHEN will Working Group 1 begin this work?



BOA Subarea 1 Working Group

WHEN will Working Group 1 do this work?

**First meeting:
Saturday, February 16th
2pm @ Village Hall**

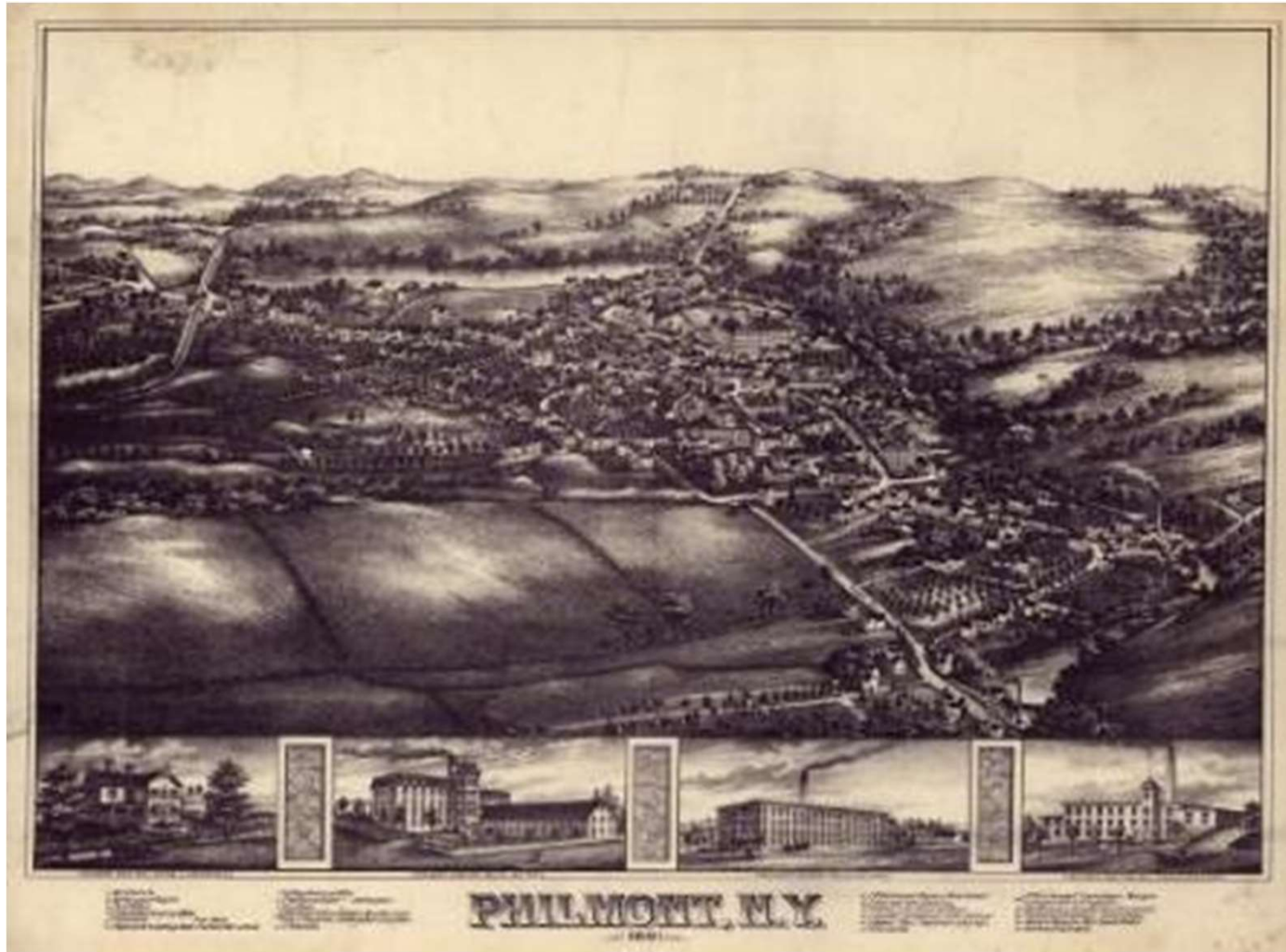
BOA Subarea 1 Working Group

WHEN will Working Group 1 do this work?

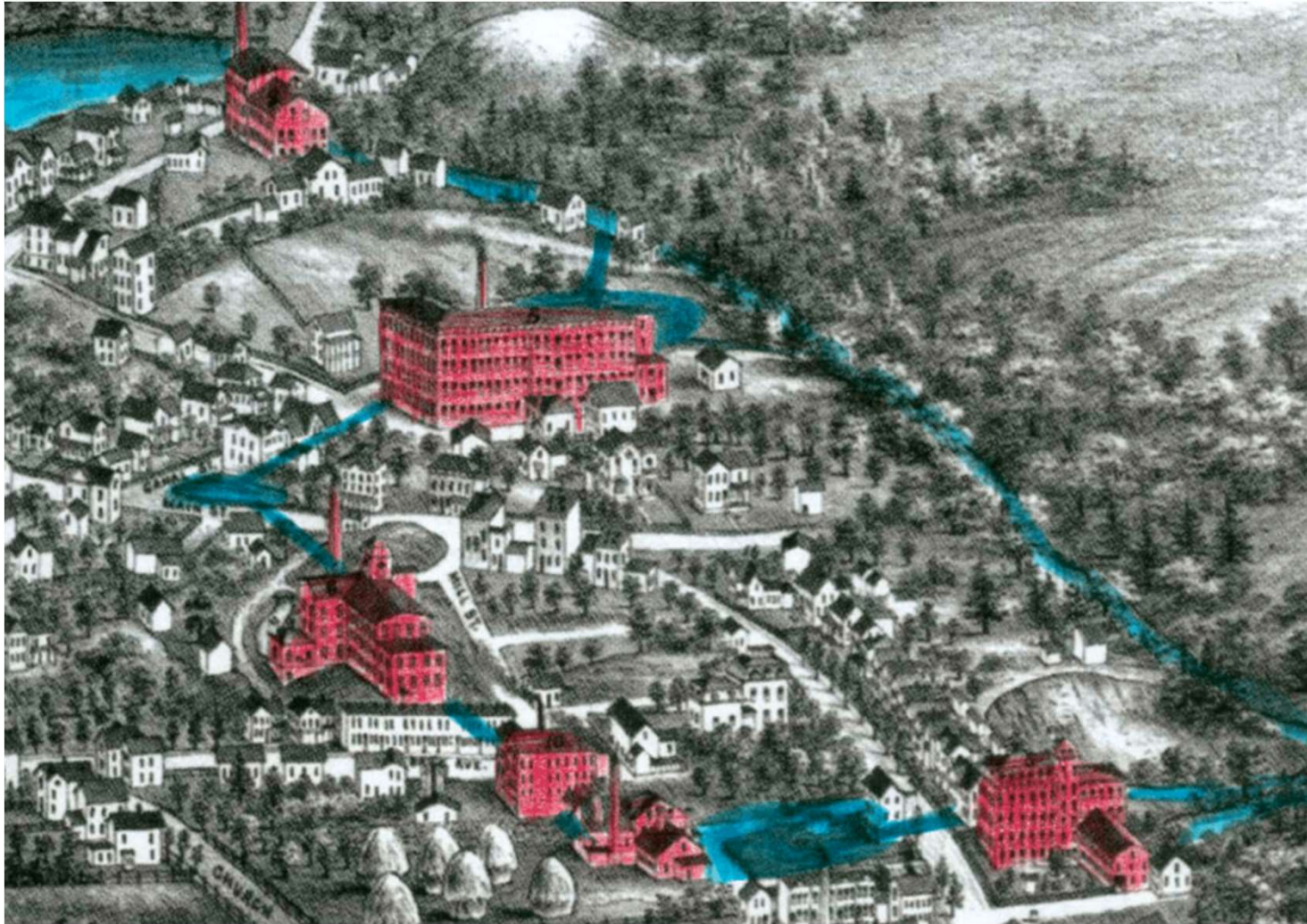


WE HOPE YOU WILL JOIN US!

BOA Working Group 2: Heritage Development



BOA Working Group 2: Philmont Waterworks



BOA Working Group 2: Heritage Development

Sites of Interest:

- Hopkins house / Hilltop Hotel
- Empire House
- Vanderbilt Lakeside
- Opera House
- Churches
- Homes & mansions
- Harlem line & Philmont station site
- Mills and sluices / pond flumes



BOA Working Group 2: Philmont as Important Railroad Hub



BOA Working Group 2: Heritage Development

HOW DO WE:

- Preserve ?
- Educate?
- Support our youth?
- Create economic opportunity?



BOA Working Group 2: Historical Team

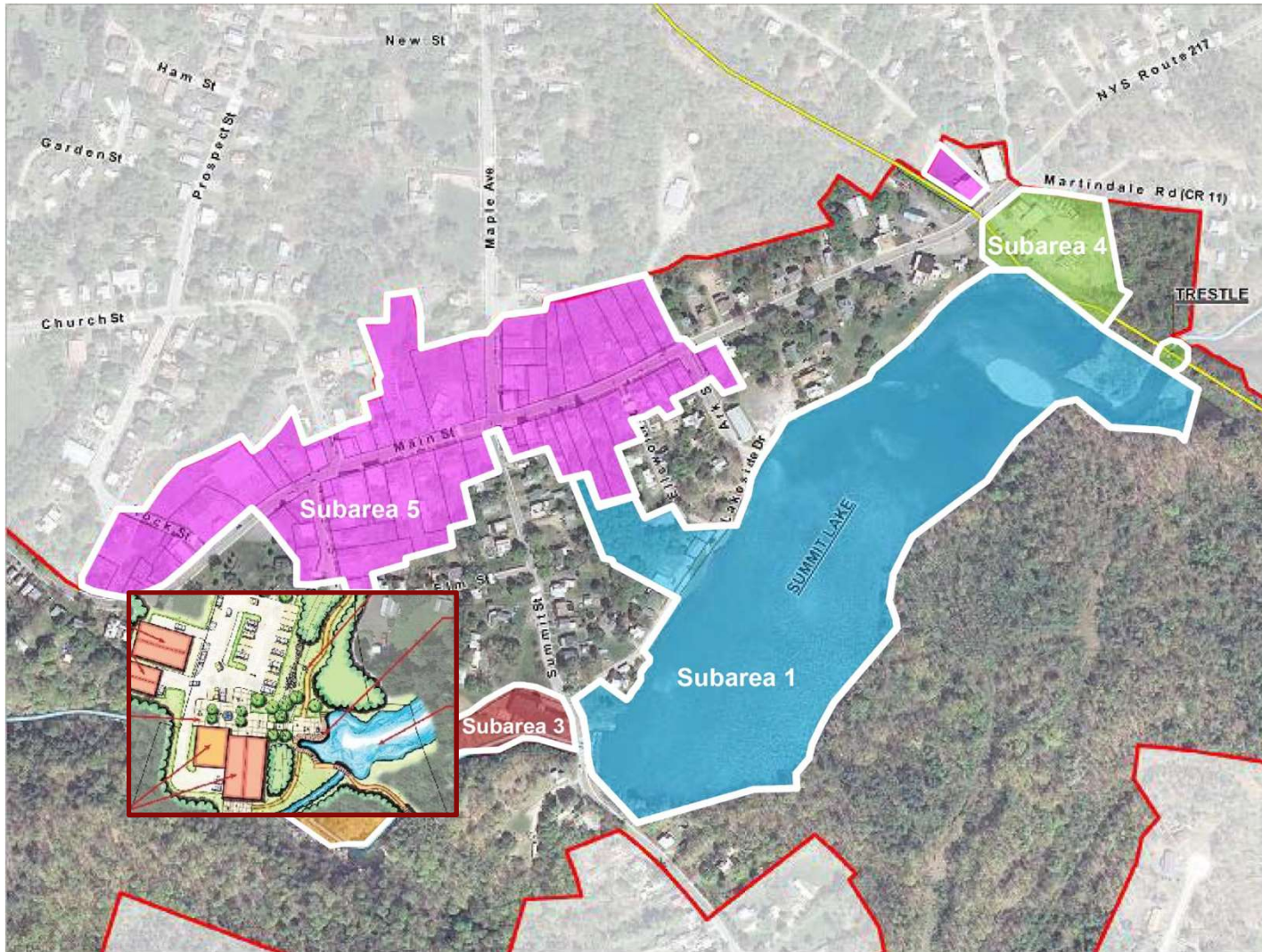
- Work closely with Subareas #2 and #3
- Assist other Subareas
- Join us to help tell the story of Philmont's past, while supporting Philmont today!



Union Free School, Philmont, NY (circa 1910)



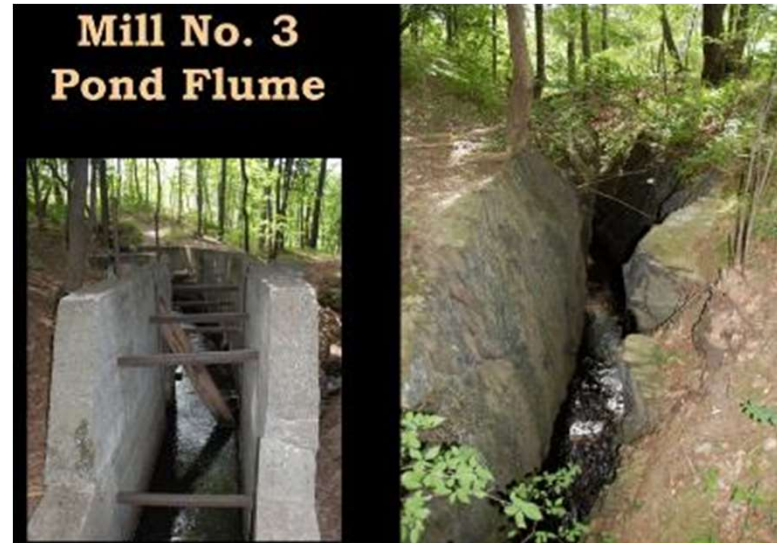
BOA Working Group 2: Create Philmont Historical District?



BOA Working Group 2: Sub-area #2 -- Canal Street Mills



BOA Working Group 2: Sub-area #2 -- Canal Street Mills



BOA Working Group 2: Sub-area #3 -- Summit Mill



Major Historic Site:

- Eligible for State Register of Historic Places
- Plenty of space for possible visitor center, exhibits, etc.
- Symbolic / Icon of Philmont
- Connects Reservoir and Canal St Mills

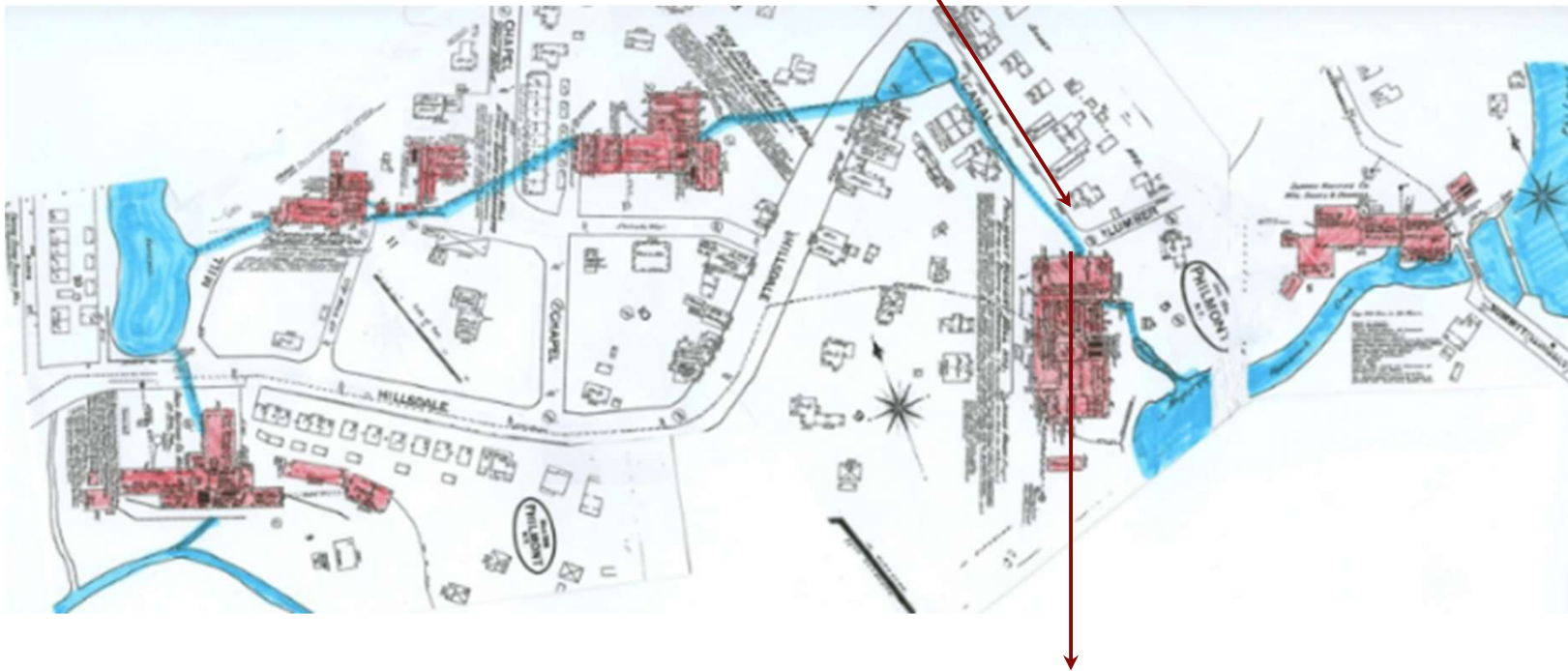
BOA Working Group 2: Connecting Sites

Mill No. 3 Pond Flume



BOA Working Group 2: Interpretive Historical Signage

- At location where each mill stood
- At locations of significant ruins / infrastructure
- At historic homes and buildings
- At key locations where sluices and retaining ponds existed



BOA Working Group 2: Interpretive Signage Content (example)

Transportation

Regional Railroads and the Maybrook Line

Before the first railroads were built in America in the 1830s, long distance travel was by horse and carriage over rough unpaved turnpikes and by canal boat. The Hudson River and the Appalachian mountains were major obstacles to early east-west travel. The Erie Canal improved travel between eastern New York and the Midwest in 1825. Later, more efficient railroads arrived by the 1840s and made many canals obsolete.

The first railroad in Hopewell, the Dutchess & Columbia, linked Dutchess Junction near present-day Soan to western Connecticut in 1871. This line was built to transport coal and goods from west of the Hudson River into New England. In 1881 the New York & New England Railroad built from Waterbury, CT to Hopewell. This made the location a true "junction." The railroads built freight and service facilities and a small busy village grew up around the rail yards.

Illustration of a canal boat on the water.

A historical newspaper clipping about a railroad.

Photograph of a steam locomotive crossing a bridge.

Photograph of a steam locomotive on tracks.

Photograph of a train at a station platform.

Two photographs showing freight trains.

The Poughkeepsic River Bridge

The Poughkeepsic bridge in 1888. The people on the bridge.

Between the 1840s and 1880s all railroad traffic south of Albany crossed the Hudson River on barges. In 1888 the first railroad bridge over the river south of Albany was completed at Poughkeepsic. The Poughkeepsic River Bridge was a critical part of the important "Maybrook line" rail link to southern New England. The Maybrook line, which connected freight yards in Maybrook, New York and New Haven, Connecticut, passed through Hopewell Junction.

A 1974 fire shut down the Poughkeepsic River Bridge and changed freight railroad routes into New England. Rail service on the portion of the Maybrook Line in Hopewell ended in the early 1980s. The Dutchess Rail Trail now follows the Maybrook Line west to the bridge, now the Walkway over the Hudson State Park.

The Decline of Rail

A photograph of a train and a photograph of a truck.

Rail traffic declined during the Great Depression in the 1930s. Automobiles began to take passengers from the railroads. The last passenger train stopped in Hopewell in 1933. After the World War II industrial boom rail traffic declined again. Interstate 84 was completed between Pennsylvania and Connecticut in 1971. It followed the Maybrook line across the Hudson River valley and took long distance freight business from the railroad. The Penn Central took over regional rail lines in 1968. Control on the last Maybrook line freight train past the Hopewell Depot in 1982, marking the end of railroading in the town.

BOA Working Group 2: Create a Philmont Historical Society?

- Base for researching, designing and maintaining all wayfaring and interpretive signage
- Repository for historical artifacts, photographs, etc.
- Youth-guided and self-guided walking tours
- Youth photography and archeology programs
- Maintain historical programs in the community (e.g. home tours)



Union Free School, Philmont, NY (circa 1910)



BOA Working Group 2

WHEN will Working Group 2 do this work?

BOA Working Group 2

WHEN will Working Group 2 do this work?

**First meeting:
Saturday, February 16th
2pm @ Village Hall**

BOA Working Group 2

WHEN will Working Group 2 do this work?

