

# Summit Reservoir Area Revitalization

BOA  
Brownfield Opportunity Area  
grant

# IDEAS FOR REVITALIZATION

- **“Thank you”** to all who attended the August 2010 Public Hearing for this project!
- Your ideas contributed to the Village receiving this BOA grant.
- The ideas helped make the BOA grant application strong enough to get awarded!

# Ideas contributed by

Elizabeth Angello, Robin Andrews, Hanna Bail  
Daniela Bertol, Peter Blandori, Sheri & Dave Bolevice,  
Tom Buckner, Vicky Brill, Kimberly Czyzewski,  
Elizabeth Davis, Ed Fertik, John Gourlay,  
Rae Ann Heinrich, Chris Hoppe, Mary Ellen Madison,  
Kate Martino, Chris McFee, Charles and Phylis Nichols,  
Eileen Ordu, Ashley Ostrander, Denna Pewtherer,  
Chip Rosien, Channa Seidenberg, Tim Smith,  
Carolyn Stern, Joanne Vilaghy, Hugh Williams.

# Including

- Improved public safety & fire protection
- Improved parking areas
- Business stimulation for the area
- Need for children's activities
- Development of area history
- Connection to already developed trails
- Renewable energy sources
- Connection to the Pine Haven area
- Study of reservoir changes/deterioration and current channel flow issues

Funded by  
NYS Department of State (DOS)  
Office of Communities and Waterfronts  
Brownfield Opportunity Area Program

to

The Village of Philmont  
providing \$225,000

to work with the community to create a plan  
for the revitalization of

**The Summit Reservoir Area**

BOA

**BROWNFIELD OPPORTUNITY AREA**

# BROWNFIELD?

dormant properties  
where contamination has  
impeded redevelopment  
turning the properties into economic and  
environmental drains on localities.

# OPPORTUNITY?

For the community to come together with a  
planning firm/team



guided by a  
Community Participation Plan

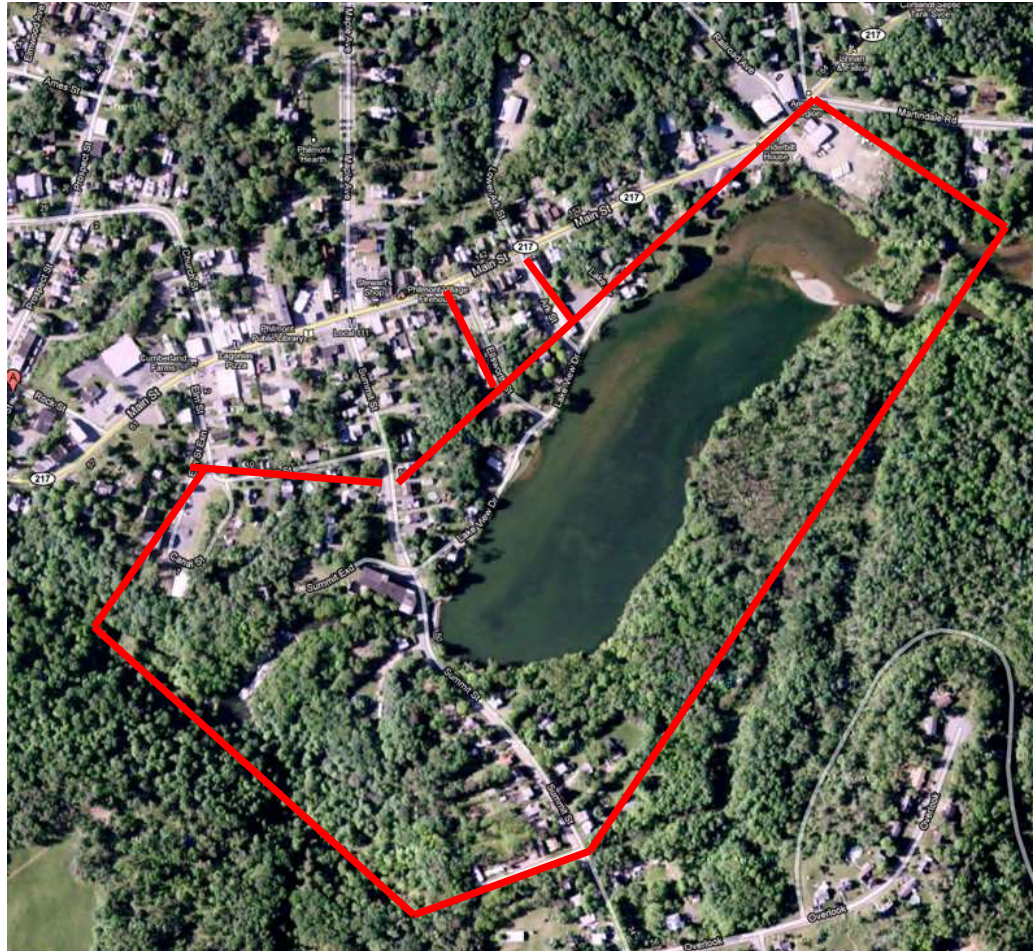


# AREA?



Summit Reservoir a critical public amenity,  
and as such a center catalyst for the area  
as a natural resource

What's the geographical area?  
Approximately 88 acres



# What's the Brownfield Opportunity Area grant for?

- To create a revitalization plan for the Summit Reservoir Area by helping municipalities (Village of Philmont) and community non-profit organizations (Philmont Beautification, Inc.) complete a PLANNING and implementation strategy working with community input collaboration, and participation.
- Pay for expertise consultants like a waterfront design company, engineers, and other specialized consultants to help the community to create a plan for Summit Reservoir Area revitalization.

**NYS Communities + Waterfronts  
helps communities develop a  
shared vision and strategy for  
revitalization.**



# What stage are we at?

## **ORGANIZING**

- Exec. Steering Committee has been formed including:
  - Village Trustee Larry Ostrander, Co-Chair
  - Village Trustee Barbara Sagal, Co-Chair
  - Sally Baker, Philmont Beautification, Inc
  - Jean Giblette, High Falls Gardens
  - Peter Paden, Columbia County Land Conservancy
  - Thomas Paino, Sustainable Architecture
  - Chris Reed

# Selecting a planning firm

- Over 21 planning firms were contacted
- 12 firms/teams responded with qualifications
  - 4 firms/teams were selected to submit full proposals
- August 23<sup>rd</sup> is the deadline for the proposals

# Next organizing stage?

## **Forming a Community Participation Team**

Objectives?

1. Broad community participation
2. Help write the Community Participation Plan
3. Participate in creating the BOA Nomination  
Step 2. plan

# To produce a roadmap and plan for the Summit Reservoir Area Revitalization





# BOA Project Examples

turning

From this

To this



From this

To this



# Rethinking Water Access





# Protecting Natural Resources



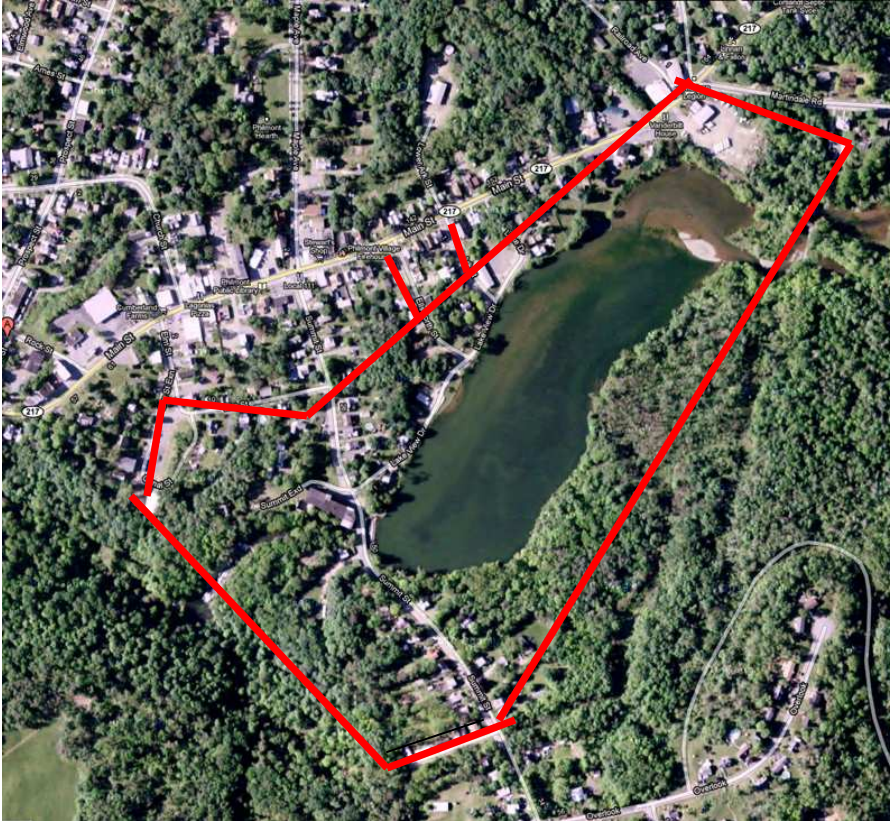


# Protecting Scenic Resources





# What's in the Summit Reservoir Area?



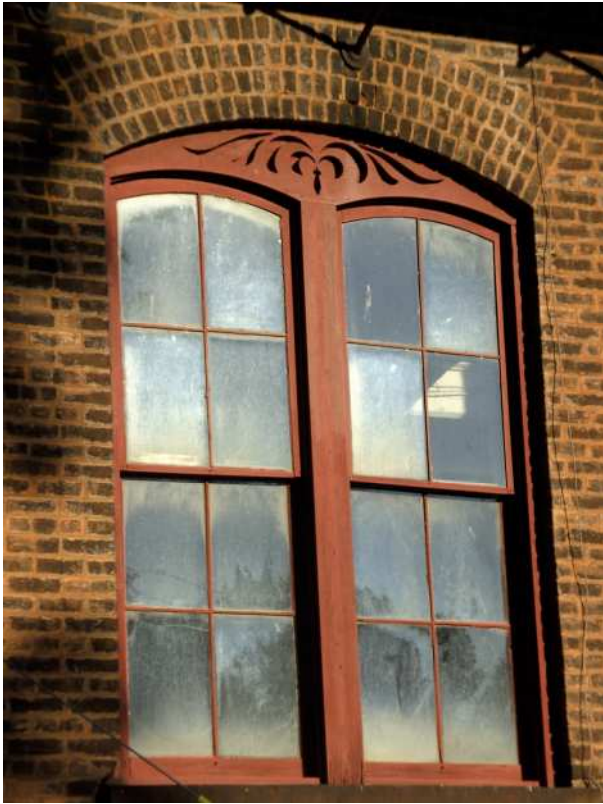
- Summit Mill
- Vanderbilt House Hotel
- Summit Lake
- Joshua Essig Trail
- Residential houses
- Commercial buildings
- Summit Lake DEC conservation area
- Abandoned residential buildings
- High Falls Land Conservancy
- Parks & municipal parking lots
- Village Community Center
- Canal St. historic warehouses
- Harlem Railroad Trestle
- Lakeshore Drive

# Summit Reservoir





# Summit Mill





# Vanderbilt House Hotel



# Village Community Center



# Beach area





# Village Gazebo



# Ellsworth St. residential(s)





# Canal St historic warehouses



# What OTHER services does the BOA grant include?



- Phase I environmental report(s) for previously used factories and possible brownfield sites in the area
- Water & sediment testing of the Reservoir
- 6 community workshops with invited guest speakers to help us learn about the area

# Paying for a Design Consultant

To work with the community

- To produce the Plan, Maps, & Reports
- To produce a roadmap for the Summit Reservoir Area Revitalization
- To engage community participation



# What would a BOA plan include?



- A Market Trend(s) Analysis to help the plan with revitalization strategies to boost Philmont's local economy.

# What would a BOA plan include?



- An engineering evaluation of the cause of sediment build-up in Summit Reservoir
- Propose remediation solutions to help bring the Reservoir back to health

# What would a BOA plan include?



- A revitalization plan to improve Village resources in the area, including, open space use, natural resources, trails, walkways, parks, aimed at improving community recreation and economic opportunities.

# How can YOU help now?

- Join the Community Participation Team
- Attend the Community Workshops
- Talk to your neighbors
- Sign up to receive an email Newsletter
- Volunteer your expertise & skills
- Become an event volunteer

# To participate in this project

## Contact:

- Village Trustees Barbara Sagal or Larry Ostrander as Co-chairs of the Executive Steering Committee
- PB Inc as Project Management  
[info@pbinc.org](mailto:info@pbinc.org)  
TEL: 518 697 0038
- Visit [www.pbinc.org/summit](http://www.pbinc.org/summit)